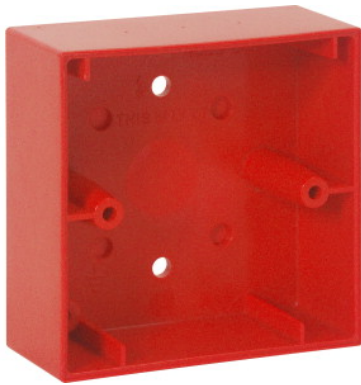


Surface mount housing for small MCP, red, similar to RAL 3020



Part-No. 704980

Red, for manual call points Part No. 804970, 804971 and 804973, for small design electronic modules Part No. 804950/51, 804955/56 with housing Part No. 704950.

Dimensions

W: 88 mm H: 88 mm D: 36 mm



Mounting material

Features:

- Slimline design
- Low power consumption
- Plug-in connection terminals (two direction)
- Optional terminal terminals
- Triple key function (test, open, reset)
- Detectors that are not ready for operation can be marked with the "Out of order" label by reversing the enclosed glass pane